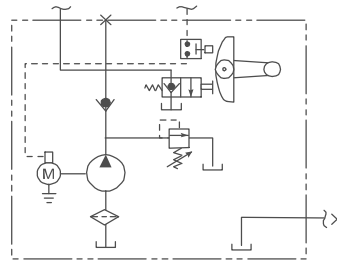


### 3.5 Model M-3301 Dyna-Jack® (Formerly M-301)

#### Description

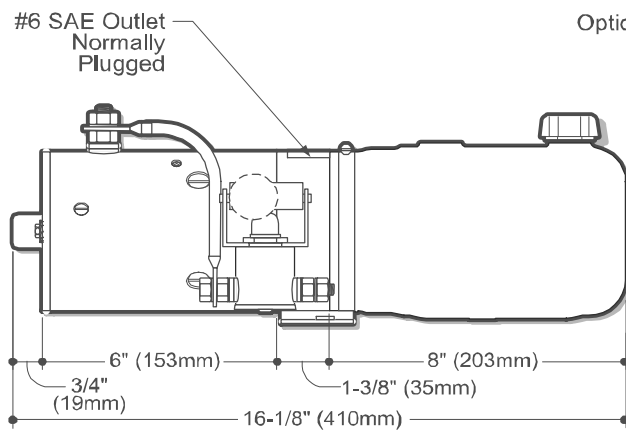
- Pump / Motor / Reservoir / Unit
- Manually Operated 2-Way/2-Position Normally Closed Valve With Motor Start Switch
- Check Valve
- Externally Adjustable Relief Valve
- #4 SAE Outlet
- Horizontal Mounting Standard

#### Schematic



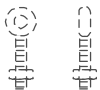
#### Popular Options

- Vertical Mounting / Motor Up

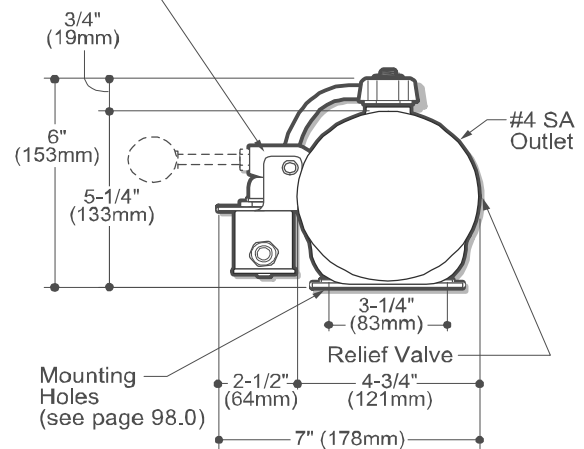


SIDE VIEW

Optional Eye-Bolt



Optional Handle Location



END VIEW

#### How to Order Your M-3301 Dyna-Jack®

Comprehensive information may be found on the page referenced below each selection category.

Shown as standard with:

Pump	Motor	Voltage	Reservoir (Length)	Mounting Bracket	Mounting Position	Accessories
	08111	12	06102	04560	Horizontal	
Ref. Page 51	Ref. Page 62		Ref. Page 86-96	Ref. Page 101		Ref. Page 102